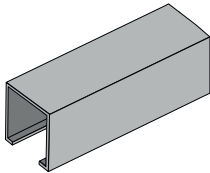
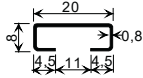
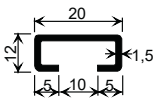
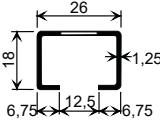
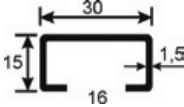
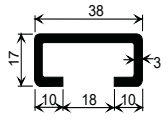
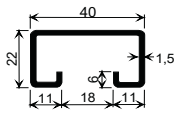
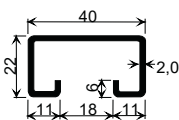


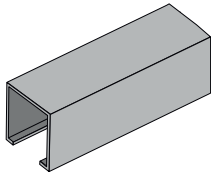
Framing Channels, plain back



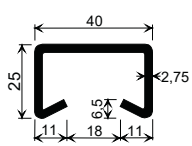
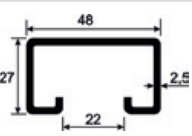
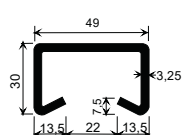
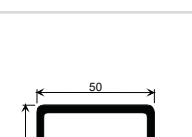
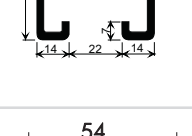
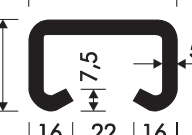
Framing Channels cold rolled, suitable for welding and plugging.
 Material / finish: Steel mill finish (wb), Steel hot dip galvanized (hdg),
 Steel pre-galvanized (sZn), Stainless steel A4 and A2
 Fix length: 1 m, 1,5 m, 2 m and 3 m additional charge.
 Delivery length ca. 6 m. Other length and dimension on request.

Type	Material / finish	Stock no.	Price € / m
 20/8	Steel wb	100.070	1,45
	Steel sZn	104.070	1,75
 20/12	Steel wb	100.020	2,00
	Steel hdg	102.020	3,35
	Stainless steel A4	106.020	14,10
 26/18	Steel sZn	104.019	2,25
 30/15	Steel wb	100.041	4,10
	Steel hdg	102.041	5,35
 38/17	Steel wb	100.011	5,50
	Steel hdg	102.011	8,95
	Stainless steel A4	106.011	43,15
 40/22 (1,5)	Steel wb	100.010	3,80
	Steel tZn	102.010	6,90
	Stainless steel A4	106.010	33,40
 K40/22 (2,0)	Steel wb	100.009	4,55
	Steel hdg	102.009	8,05
	Stainless steel A4	106.009	35,00

Framing Channels, plain back



Framing Channels cold rolled, suitable for welding and plugging.
 Material / finish: Steel mill finish (wb), Steel hot dip galvanized (hdg),
 Steel pre-galvanized (sZn), Stainless steel A4 and A2
 Fix length: 1 m, 1,5 m, 2 m and 3 m additional charge.
 Delivery length ca. 6 m. Other length and dimension on request.

Type	Material / finish	Stock no.	Price € / m
 <p>40/25</p>	Steel wb	100.008	6,30
	Steel hdg	102.008	10,75
	Stainless steel A4	106.008	46,65
	Stainless steel A2	108.008	37,35
 <p>48/27</p>	Stahl wb	100.003	8,65
	Stahl hdg	102.003	14,80
 <p>49/30</p>	Steel wb	100.002	8,75
	Steel hdg	102.002	15,45
	Stainless steel A4	106.002	77,00
 <p>50/40</p>	Steel wb	100.001	11,45
	Steel hdg	102.001	18,60
	Stainless steel A4	106.001	93,30
 <p>54/33</p>	Steel wb	100.021	19,00
	Steel hdg	102.021	30,00
	Stainless steel A4	106.021	114,60
 <p>72/49</p>	Steel wb	100.022	36,85
	Steel hdg	102.022	56,60
	Stainless steel A4	106.022	213,45