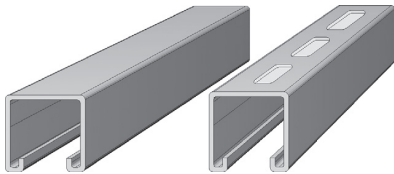


### Framing channels system 41(on request)



Framing channels cold rolled, suitable for welding and plugging.

Material / finish: Steel mill finish (wb) and Steel hot dip galvanized (hdg), Steel pre-galvanized (sZn), Stainless steel A4 and A2 and Stainless steel 1.4301 (A2)

Matching T-bolts: HS 41/22, M8 - M16 and HS 41/41 M8-M16

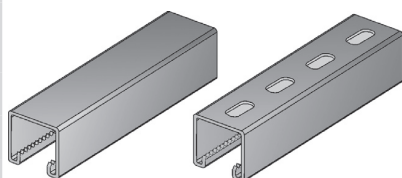
Matching locking plates: GP 41/22 and 41/41, M6 - M16

Delivery length ca. 6 m. Other length on request.

Framing channel plain back		Material / finish	Stock no.	Price € / m
	41/22	Steel wb	100.036	5,00
		Steel hdg	102.036	8,85
		Steel sZn	104.036	6,55
		Stainless steel A4	106.036	50,35
	41/41	Steel wb	100.034	7,95
		Steel hdg	102.034	13,20
		Steel sZn	104.034	10,05
		Stainless steel A4	106.034	69,40

Framing channel slotted back		Material / finish	Stock no.	Price € / m
	41/22 Hole size 14 x 30	Steel wb	101.036	5,75
		Steel hdg	103.036	9,60
		Steel sZn	105.036	7,30
		Stainless steel A4	107.036	52,70
	41/41 Hole size 14 x 30	Steel wb	101.034	8,55
		Steel hdg	103.034	13,60
		Steel sZn	105.034	10,75
		Stainless steel A4	107.034	72,80

### Framing channels system 41 toothed



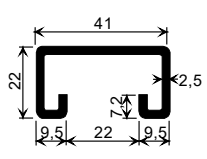
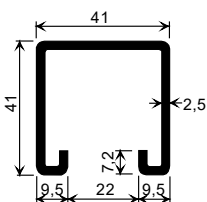
Framing channels cold rolled, suitable for welding and plugging.

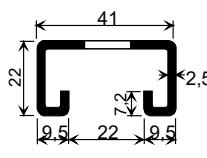
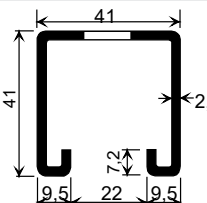
Material / finish: Steel mill finish (wb) and Steel hot dip galvanized (hdg), Steel pre-galvanized (sZn), Stainless steel A4 and A2

Matching T-bolts: HS 41/22, M8 - M16 and HS 41/41 M8-M16

Matching locking plates: GP 41/22 and 41/41, M6 - M16

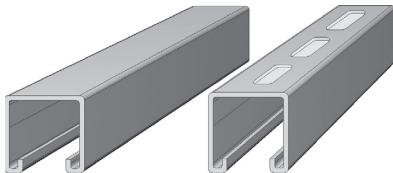
Delivery length ca. 6 m. Other length on request.

Framing channel toothed plain back		Material / finish	Stock no.	Price € / m
	41/22-Z toothed	Steel wb	100.006	6,80
		Steel hdg	102.006	12,00
		Steel sZn	104.006	8,85
		Stainless steel A4	106.006	60,50
	41/41-Z toothed	Steel wb	100.004	10,70
		Steel hdg	102.004	17,80
		Steel sZn	104.004	13,60
		Stainless steel A4	106.004	83,15

Framing channel toothed slotted back		Material / finish	Stock no.	Price € / m
	41/22-Z toothed Hole size 14 x 30	Steel wb	101.006	7,80
		Steel hdg	103.006	13,00
		Steel sZn	105.006	9,85
		Stainless steel A4	107.006	63,30
	41/41-Z toothed Hole size 14 x 30	Steel wb	101.004	11,55
		Steel hdg	103.004	18,35
		Steel sZn	105.004	14,50
		Stainless steel A4	107.004	87,50



## Framing channels system 41



Framing channels cold rolled, suitable for welding and plugging.

Material / finish: Steel mill finish (wb) and Steel hot dip galvanized (hdg),  
Steel pre-galvanized (sZn)

Matching T-bolts: HS 41/22, M8 - M16 and HS 41/41 M8-M16

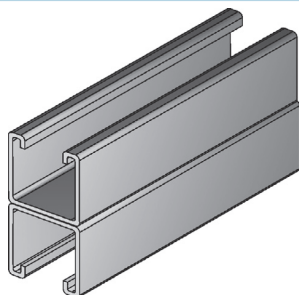
Matching locking plates: GP 41/22 and 41/41, M6 - M16

Delivery length ca. 6 m. Other length on request.

Framing channel plain back		Material / finish	Stock no.	Price € / m
	41/62	Steel wb	100.035	18,60
		Steel hdg	102.035	29,15
		Stahl sZn	104.035	24,75
	41/83	Steel wb	100.038	24,50
		Steel hdg	102.038	36,50
		Steel sZn	104.038	32,20

Framing channels slotted back		Material / finish	Stock no.	Price € / m
	41/62 Hole size 14 x 30	Steel wb	101.035	20,20
		Steel hdg	103.035	30,80
		Steel sZn	105.035	26,45
	41/83 Hole size 14 x 30	Steel wb	101.038	26,20
		Steel hdg	103.038	38,10
		Steel sZn	105.038	33,90

### Framing double channels system 41



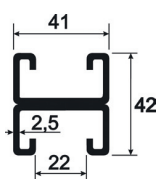
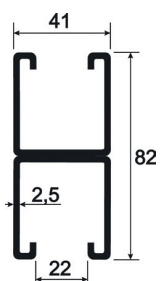
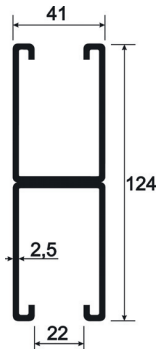
Framing channels cold rolled, suitable for welding and plugging.

Material / finish: Steel mill finish (wb) and Steel hot dip galvanized (hdg),  
Steel pre-galvanized (sZn), Stainless steel A4 and A2

Matching T-bolts: HS 41/22, M8 - M16 and HS 41/41 M8-M16

Matching locking plates: GP 41/22 and 41/41, M6 - M16

Delivery length ca. 6 m. Other length on request.

Framing channel plain back	Material / finish	Stock no.	Price € / m	
	41/22 D	Steel wb	100.046	12,55
		Steel hdg	102.046	22,55
		Steel sZn	104.046	18,50
		Stainless steel A4	106.046	125,80
	41/41 D	Steel wb	100.044	19,90
		Steel hdg	102.044	32,95
		Steel sZn	104.044	24,90
		Stainless steel A4	106.044	173,45
	41/62 D	Steel wb	100.045	50,55
		Steel hdg	102.045	77,00
		Stahl sZn	104.045	70,00