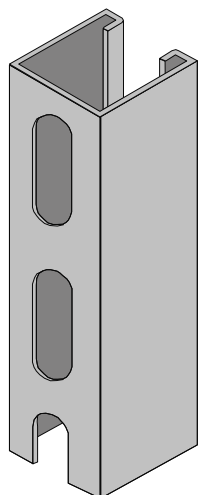
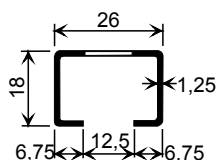
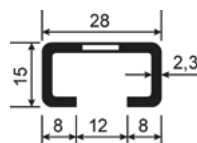


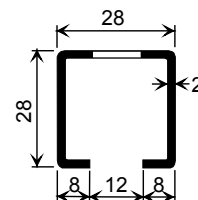
## Montageschienen, gelocht kaltgewalzt


**26/18**


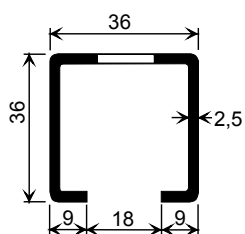
Ausf.: sZn

**28/15**


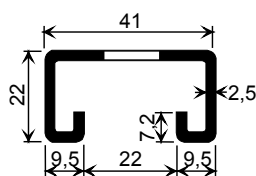
wb, tZn, A2, A4

**28/28**


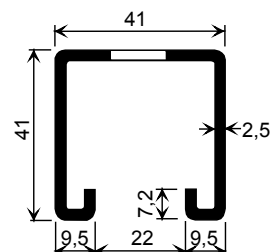
wb, tZn, sZn, A2, A4

**36/36**


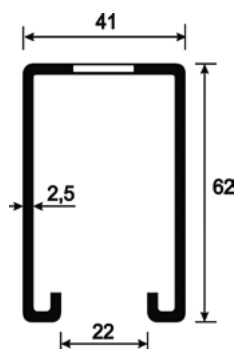
Ausf.: wb, tZn, sZn, A4

**41/22**


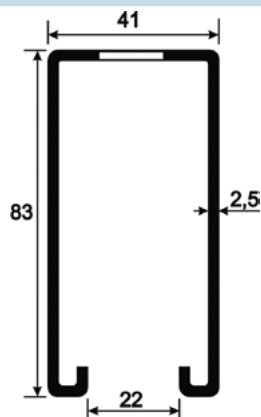
wb, tZn, A2, A4

**41/41**


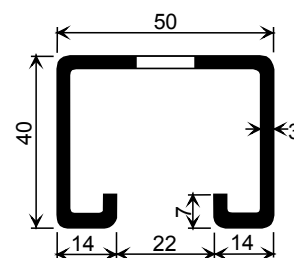
wb, tZn, A4

**41/62**


Ausf.: wb, tZn, sZn

**41/83**


wb, tZn, sZn

**50/40**


wb, tZn, A4

### Abkürzungen / Werkstoffgüten:

- wb = Stahl S235JR, walzblank
- tZn = Stahl S235JR, feuerverzinkt
- sZn = Stahl S235JR, sendzimirverzinkt
- A2 = Edelstahl 1.4301
- A4 = Edelstahl 1.4571/1.4401

Lieferlängen: Lagerlänge ca. 6 m  
 Andere Profilabmessungen und Werkstoffgüten auf Anfrage.